

### What Others Say

Dear Brother Morse:

I have read the booklet on Bibleland with interest and pleasure.

As I went through it, page by page, I could see again the vivid presentation as it stands in your exhibition ground in Florida. Every scene is a means of grace to those who approach it with due reverence. I have read nothing but favorable comment from my friends who have seen it.

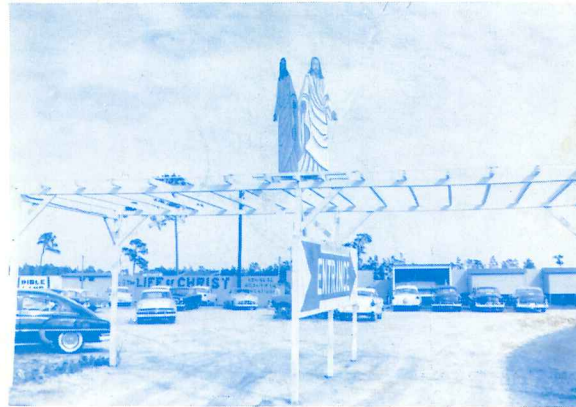
It would seem to me that the time is not far distant when Bibleland will be known across the nation as one of Florida's great attractions. Churches, Schools, and Young Peoples Societies will do well to organize their trips so as to take it in when passing through Florida.

It has my hearty endorsement and my best wishes.

Sincerely yours in our Lord Jesus,

Signed: Harry E. Jessup,

President Emeritus—Chicago Evangelistic Institute



### Gift Shoppe

- Religious Records
- Religious Souvenirs
- By Nationally—
- Religious Books
- known Artists
- Bibles
- Religious Music
- Florida Souvenirs

Gift Shop Closed Sundays

### SEE OUR LIVE FLAMINGOS

### Illustrated Booklet

Send for illustrated booklet of Bibleland  
\$1.00 in full life color

Useful in teaching all ages

### Colored Slides Available

We now have available complete sets of colored slides or will sell any chosen slides 3 for \$1.00. These slides will be very useful in teaching Sunday School classes, youth work, and in many, many ways. They are both entertaining and educational. Send for a full or part set today. We will send on approval.  
Full set of 30 postpaid for ..... \$7.50

### Your Florida Trip

No trip to Florida is complete if you don't see BIBLELAND. It is being talked about in many states. The mail brings all sorts of inquiries. Visitors tell their friends who are routing their trips to pass through Central Florida and see BIBLELAND.

# Bibleland

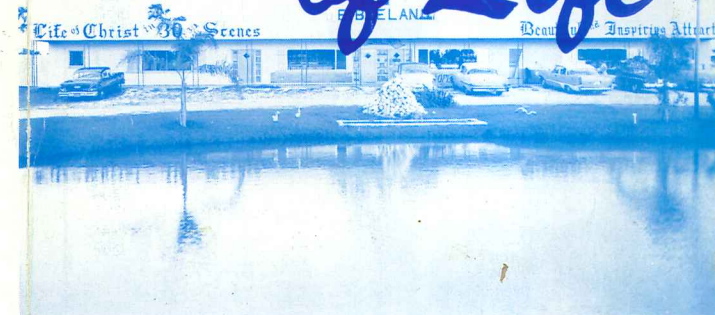
LOCATED ON U.S. HIGHWAYS 17-92-441

6 MILES SOUTH OF ORLANDO

10 MILES NORTH OF KISSIMMEE

Featuring . . .

# Garden of Life



A 500 FOOT PANORAMA OF THE

# Life of Christ

Owned and operated by  
BIBLELAND FOUNDATION

[A Florida non-profit corporation registered in  
Osceola and Orange Counties]

10801 SOUTH ORANGE BLOSSOM TRAIL,  
ROUTE 1, ORLANDO, FLORIDA

Fay Morse, Founder and President



### The Bible Meditation League

International Headquarters  
957 East Broad Street, Columbus, Ohio  
Office of International President  
Don R. Falkenberg, D.D.

MR. FAY MORSE,  
BIBLELAND  
ORLANDO, FLORIDA  
Dear Brother Morse:

One of the most thrilling hours I have yet experienced in traveling through Florida was my visit to your Scenic Bibleland, a visit that was so entrancing as to bring me back a second and a third time during the past winter.

You have so vividly portrayed the events in the Life of Christ that a visit to your Bibleland should be a "must" for every lover of the Word of God and of the Saviour.

Yours in the love of Christ,  
Signed: Don R. Falkenberg

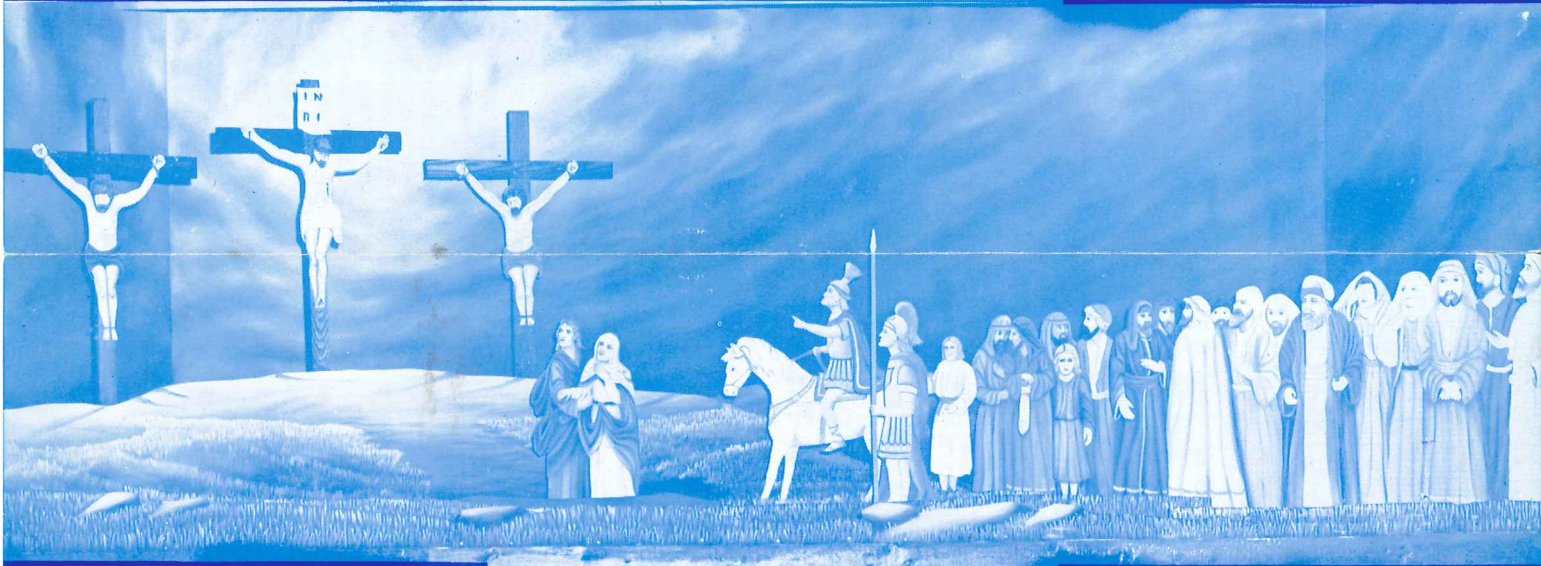
## Founders

Mr. and Mrs. Fay Morse of Royal Oak, Michigan are the founders and have created BIBLELAND at their own personal expense. They will receive no profit from same. They hope BIBLELAND will be a reminder to viewers to attend the church of their choice and that this will be a method of sowing seed.



## Admission: Free-will Offering

BIBLELAND is a non-profit project and is supported by free-will offerings. From these are first paid the operating expenses. None of these offerings go to Mr. and Mrs. Fay Morse, the founders. Surplus after expenses will be used for missions. It is hoped to send Bibles to the many people overseas who are now begging for Bibles.



## Unusual Fire Scene

We have a new scene showing Moses approaching the burning bush which was not consumed. We use actual fire but the bush is unharmed.

## Our Future Plans

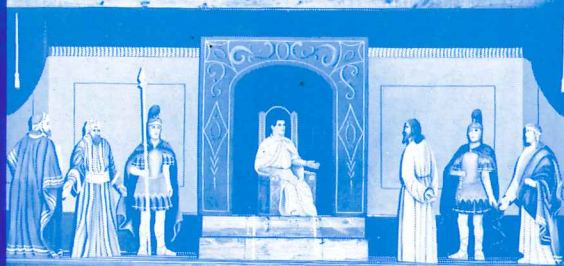
The fact that we have 20 acres with one fourth mile frontage of U. S. Highway 17-92-441 makes future expansion plans possible.

First, we plan what is to be known as a "Missionary Mart." This will be patterned after our so called shopping centers. Free spaces will be offered in this building to fundamental denominations, where they may display things of interest in their missionary work, their schools and their publications.

Second, we plan to build a miniature Palestine on five acres of the property. This will have a miniature train covering the area for visitor transportation.

## Endorsed by Pastors

The MINISTERIAL ASSOCIATIONS of both Kissimmee and Orlando, Florida, have officially endorsed inspiring BIBLELAND. [Over 50 churches]



## Sunday Schools

Pastors and teachers are welcome to bring their Sunday School classes and daily vacation Bible school classes. The whole story is there for them to visualize from Christ's birth to ascension including some of the miracles. They will learn more here in 30 minutes than they would by any other method in many days.

## Artists

The artists are Rev. and Mrs. Earl K. Lund of Maple City, Michigan who have been with us 5 winters and are under contract to return again next fall. They personally own and operate the Lund Scenic Garden of Maple City, Michigan which is open Decoration Day through Labor Day.

It took these two artists 49 weeks to complete the painting of the Bible-land scenes.

## Night Lighting

The scenes are beautifully lighted at night showing a color and reflection in the water worth traveling miles to see. We are open 365 days a year from 9:00 a.m. to 9:00 p.m.,