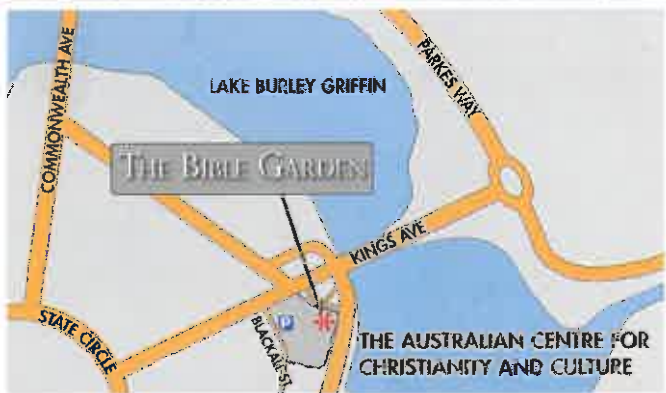
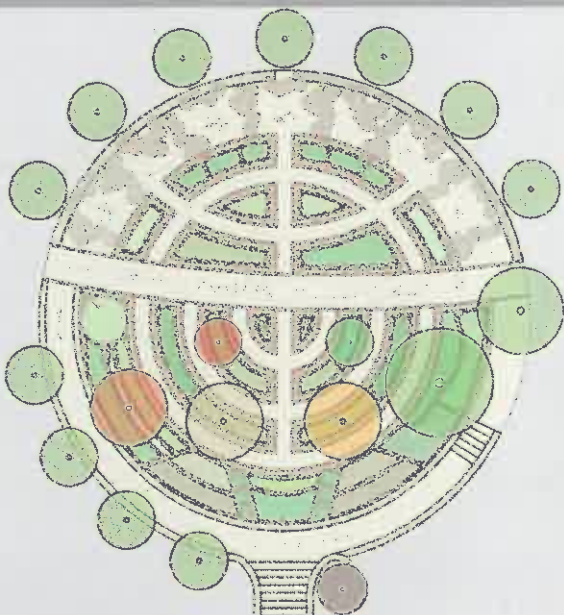


An interactive map with detailed references for the plants and trees growing in the Bible Garden can be found at

www.thebiblegarden.org



THE BIBLE GARDEN

AUSTRALIAN CENTRE FOR CHRISTIANITY AND CULTURE

PILGRIM WALK 15 BLACKALL STREET BARTON ACT 2600

THE BIBLE GARDEN



The Bible Garden is located within the precincts of the Australian Centre for Christianity and Culture in Barton on the edge of the Parliamentary Triangle

The Garden contains many of the plant species mentioned in the Bible in a tranquil setting overlooking Lake Burley Griffin

The shape of the garden resembles The Menorah, which is said to represent the burning bush where Moses met God, who told him to lead the Israelites to the land of milk and honey

The Garden was established with a benevolent grant from The Bible Garden Trust, a perpetual trust established by the late Mr Gerald Hercules Robinson. The purpose of the trust was to create and maintain gardens that featured the botany that is described in the Bible, and through these activities to educate Christians, particularly young Christians, in the Scriptures

The Bible Garden was officially opened by, among others, the former Governor-General of Australia Sir William Deane at a ceremony held in the Garden on Sunday 3 August 2008



Australian Centre for Christianity and Culture
A PLACE TO BELONG TO & INSURE THE SPIRITUAL JOURNEY OF AUSTRALIANS

Charles Sturt
University