



Model 1191—DUAL-TEMP—11 cu. ft.

SEE Admiral's new Glacier Blue interior, new Serv-a-dor, new Butter Keeper and Coldest-Cold Freezer (52° below freezing!)

**NO DEFROSTING!**

**NO DE-FREEZING!**

**NO DRIED OUT FOODS!**



**OLD WAY:** This egg stood 7 days in an ordinary refrigerator. The white crystallized, the yolk hardened. It's unusable.



**DUAL-TEMP WAY:** This egg, from the same dozen, stood uncovered 7 days in an Admiral Dual-Temp. Moist-cold kept it perfectly fresh.

With an Admiral Dual-Temp you **never have to defrost**, because frost never forms in the spacious, moist-cold food storage compartment. **No de-freezing** either, because you never have to shut off the cold; frozen foods stay frozen, never get mushy. And you **never have dried out foods**—they stay fresh, moist, appetizing without lids or wrappings in the big moist-cold compartment. It's the only refrigerator with a big, sub-zero freezer and a moist-cold compartment, all behind one door... actually 2 great appliances in 1! See the thrifty, new '51 Admiral Dual-Temp today at your nearby Admiral dealer.

Admiral refrigerators begin as low as \$199.95 for 7½ cu. ft.

Also see **Admiral Electric Ranges**, the only ranges that give you the accuracy of Flex-O-Heat controls, easy-to-operate automatic 3-way timer, plus the automatic, self-turning Rotary Roaster.

# Admiral

**DUAL-TEMP**

TELEVISION • APPLIANCES



Free subscription to "America's Smart Set".  
See your Admiral dealer.

TELEVISION: SEE AND HEAR "LIGHTS OUT" MONDAYS, 9 PM, EST, OVER NBC NETWORK. "STOP THE MUSIC" THURSDAYS, 8 PM, EST, OVER ABC NETWORK.





**AT BOTTOM OF HILL**, statue stands waiting as volunteers from church finish clearing rocks and building skidway to pedestal atop the 90-foot slope.



**HALF WAY UP**, statue inches along under combined efforts of men (above) and truck using pulley and cable. Wooden cradle was used to protect concrete.



**SAFELY ON TOP**, the concrete Christ—damaged right hand patched and wrapped—is guided onto the pedestal as Garver (right) signals to stop heaving.

## NOW SOUTHERN CALIFORNIA is more fun than ever!

Here's the vacation  
you've hoped for **plus new**  
added attractions

**NEW BEACHES** and yacht harbors  
...200 miles of surf, sand, coves  
and headlands. Ocean fishing,  
swimming, sailing, relaxing.

**NEW HIGHWAYS TO HIGH MOUN-  
TAINS**...trout streams, great for-  
ests, new trails, brilliant lakes, new  
accommodations.

**NEW EXCITEMENT IN THE MOVIE  
COLONY**...television has been  
added! See premieres, homes of the  
stars, famous cafes, celebrities.

**NEW DESERT RESORTS**...palm trees,  
swimming pools, strange plants,  
dude ranches, golf, friendly people.

**NEW ATTRACTIONS** of many kinds  
...horse races almost year-round,  
Palomar Observatory, restored mis-  
sions...and, as always, miles of  
orange groves, flower-lined boule-  
vards; music, entertainment. Our  
dry subtropical climate makes Los  
Angeles County and all Southern  
California sunny and delightful  
whichever season you come—win-  
ter, spring, summer or fall. You'll  
find ample accommodations.

**NEW FREE COLOR FOLDER** helps you  
plan your Southern California vaca-  
tion...tells what it will cost, what  
to bring and what to see and do.  
Clip and mail the coupon for your  
free copy now!

### America's 4-Season Vacationland

**ALL-YEAR CLUB OF SOUTHERN CALIFORNIA**  
—a non-profit community organization  
serving vacationists. This advertisement  
sponsored by the Los Angeles County  
Board of Supervisors for the citizens of  
Beverly Hills, Glendale, Hollywood, Long  
Beach, Los Angeles, Pasadena, Pomona,  
Santa Monica and 182 other communities.

Advise anyone not to move to Southern Cali-  
fornia now unless assured of employment.

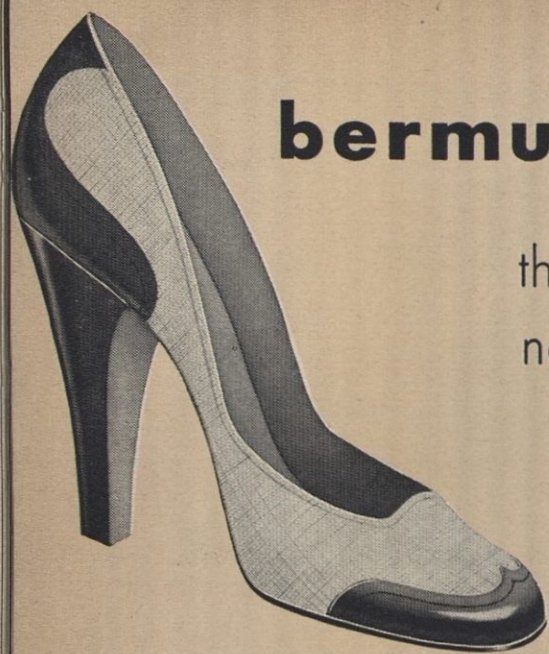


All-Year Club of So. Calif., Dept. BB-4  
629 S. Hill St., Los Angeles 14, Calif.  
Please send me your free color folder  
"PLANNING YOUR SOUTHERN CALIFORNIA  
VACATION."

Name \_\_\_\_\_  
Street \_\_\_\_\_  
City \_\_\_\_\_ Zone \_\_\_\_\_  
State \_\_\_\_\_

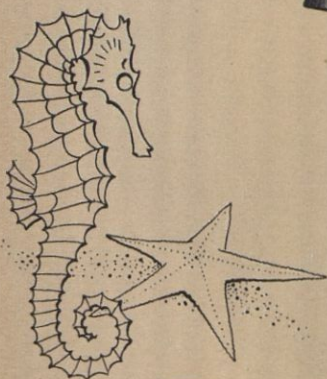
— PLEASE PRINT NAME AND ADDRESS —





## bermuda sand

the sun-drenched  
neutral that goes  
with everything



## THE AMERICAN GIRL SHOE



You are looking  
at the newest and  
most winning  
color of the season...  
done in a series  
of beautiful shoes  
by American Girl,  
in mesh, linen and  
kid leathers... to match  
the mood of  
every costume.

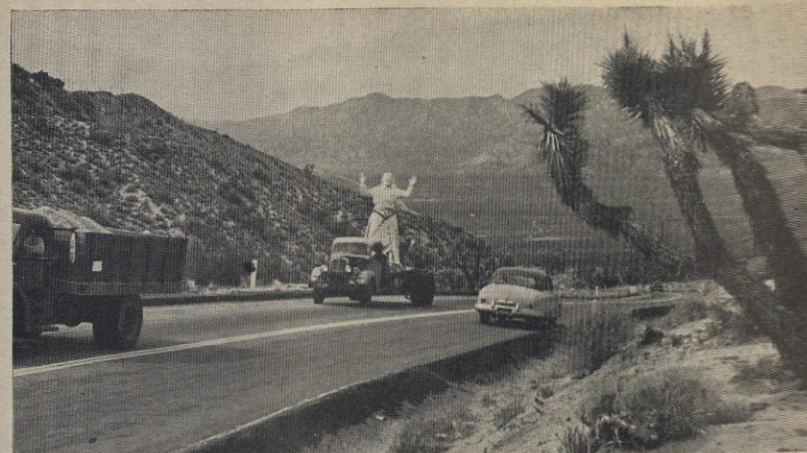
**\$7.95 - \$9.95**

slightly higher Denver west

**AMERICAN GIRL SHOE WEEK • APRIL 22nd to 28th**

AMERICAN GIRL SHOE CO., 120 Kingston St., Boston, Mass.  
Division: Consolidated National Shoe Corp.

## Desert Christ CONTINUED



**ON DESERT HIGHWAY**, statue towers above Pastor Garver's patched-up truck during 135-mile trip from Martin's Los Angeles home to Yucca Valley.



**AT GAS STATION** local residents get close-up of statue. Later, in moonlight, one youth, not seeing the truck, thought he "saw Christ come walking back."



**PASTOR GARVER** tightens a tow chain used to help hoist statue up hill.



**SCULPTOR MARTIN** repairs finger of statue broken during rough ascent.

CONTINUED ON PAGE 71



For a TREAT



instead  
of a TREATMENT



...smoke

Old Golds







The Beer that made Milwaukee Famous



*"It's OK...I saved the Schlitz!"*

It's no accident that Schlitz comes first with so many folks.

Schlitz has a very special taste no other beer can match. More people like the taste of Schlitz than any other beer.

When you try it we think you, too, will join the many who have made Schlitz...

*The Largest-selling Beer in America*

See Television's Biggest Hit:  
Schlitz presents  
**"The Pulitzer Prize Playhouse"**  
Stars of stage and screen direct from  
New York. Over ABC every Friday

Hear Radio's Brightest Comedy:  
**Mr. and Mrs. Ronald Colman**  
star for Schlitz as  
**"The Halls of Ivy"**  
every Wednesday over NBC

© 1951, JOS. SCHLITZ BREWING CO., MILWAUKEE, WIS.

*Bill Fleming*



# DESERT CHRIST

## Church moves 3-ton statue

As an act of faith which he hoped would outlast even atomic blasts, Antone Martin, a Los Angeles bomber plant worker, molded a 10-foot-tall statue of Christ out of three tons of cement. The Yucca Valley Church, out in the desert, came forward with an offer to erect it where men of all faiths could see it. Martin gave it to them. Too poor to hire the work done, Pastor Eddie Garver and his flock trucked the statue out to Yucca Valley, labored in broiling sun to build a ramp and pedestal, then hoisted the statue (pp. 68, 71) atop a 90-foot hill, overlooking the desert. The next Sunday, Pastor Garver delivered the first sermon beneath the desert Christ.



CONTINUED ON PAGE 68

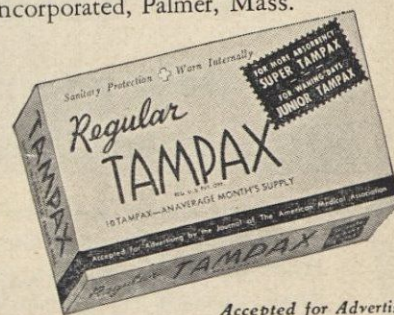
TELL your sisters  
and your cousins  
and your aunts  
about Tampax



The story of Tampax monthly sanitary protection is filled with many promises—although Tampax itself is as simple as simple can be.... You yourself may use Tampax because you are busy and active—or dainty and fastidious—or just sensible and practical. Remember that a woman can be attracted to Tampax for a great variety of reasons.

Tampax is an *internal absorbent* invented by a doctor. It eliminates belts, pins and outside pads. That is the essential advantage of Tampax and from it any number of advantages naturally follow. **NO BELTS  
NO PINS  
NO PADS  
NO ODOR** No binding, bulging or hampering restraint! No possibility of chafing or of "edge-lines" under slim dresses! No odor forms—and there is no need to remove for tub or shower!

Pure surgical cotton of high absorbency is compactly fitted into applicators, making insertion of the Tampax easy, and changing quick. Completely invisible in use. No trouble to dispose of. An average month's supply will slip into your purse.... Sold at drug and notion counters in 3 absorbencies—Regular, Super, Junior. Look for Tampax Vendor in restrooms throughout the United States. Tampax Incorporated, Palmer, Mass.



Accepted for Advertising  
by the Journal of the American Medical Association

TAMPAX INCORPORATED  
Palmer, Mass.

LF-23-41-I

Please send me in plain wrapper a trial package of Tampax. I enclose 10¢ (stamps or silver) to cover cost of mailing. Size is checked below.

( ) REGULAR ( ) SUPER ( ) JUNIOR

Name.....

Address.....

City..... State.....