

The Garden of Hope

High on a hilltop beyond the end of Edgecliff Drive, Covington, Kentucky, lies one of the most beautiful, picturesque and spectacular spots in America.....

THE GARDEN OF HOPE

"Nothing Like It In America"

How it started

In 1938, on his first visit to the Holy Land, the Builder of the Garden of Hope, Morris Coers, conceived the idea of bringing to America for the benefit of the thousands unable to make the trip to the Holy Land as he had, a bit of the fragrance of that holy spot. It was at an Easter Sunrise Service in 1956 that Rev. Coers first announced the development of the Garden of Hope, and in 1958 his dream became a reality and high above the great metropolitan area, overlooking Covington and Newport, Kentucky and Cincinnati, Ohio, there temples the skies a magnificent Garden —

◆ THE GARDEN OF HOPE

The Garden was designed by H. O. Armbruster, leading artist, and developed by Natorp Landscaping Organization. It contains thousands of trees and plants, many with biblical references. Flowers have been imported from twenty-four nations of the world.

Look for the Thorn Tree, the Rose of Sharon, the Lily of the Valley, the Fig Tree, the Cedars of Lebanon. Here in the Garden you will find the fragrance given to the earth by the Creator.

Samuel Mattar, son of the Warden of Jerusalem Tomb, spent full-time in managing and completing the Garden.

Now Samuel, who helped the original builder of the Garden and who has from time to time been involved and interested in the perpetuation of this Garden has formed a non-profit corporation to rebuild and continue the perpetuation of this beautiful and unique shrine as the original builder Rev. Coers had planned, and as a memorial to his beloved Father, Dr. Solomon J. Mattar, who spent many years caring for the Garden Tomb in Jerusalem.

The Chapel of Dreams



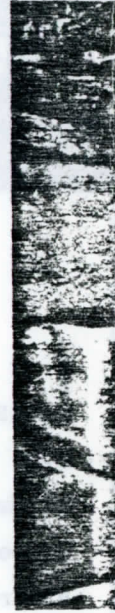
In the midst of the Garden is a small Chapel known as the Chapel of Dreams. This structure is patterned after a Spanish Mission Church, built in the year 1620.

The Chapel is one-fifth the size of the original mission church.

It is used for small weddings, meditation and prayer.

A pink stone at the altar is from the Horns of Hatten in the Holy Land, and comes from the mountain where Christ preached the Sermon on the Mount. On this stone couples will stand when marriage ceremonies are performed.

The



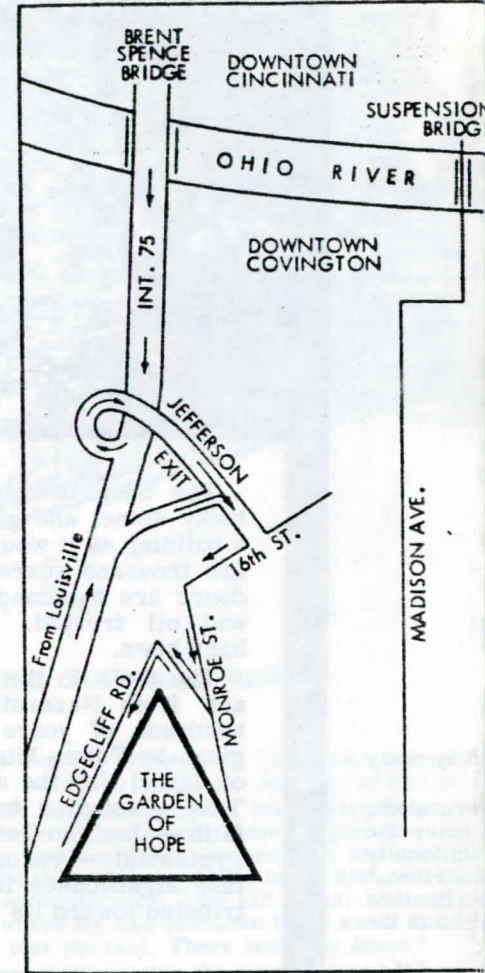
In the Garden to be the Tomb but Conferences w with the thought c narrow door cut believed to have t and on the wall j took the body of Garden a new sepu

Over a million one of the larges estimate the age constructed of Inc and it is estimate

The markings to the right of the "Jesus Christ, Alj

A Reader's Di Tomb in Jerusalem is one of two a picture that wo tomb." He did not facing an eastern

The Tomb was Miller Constructio

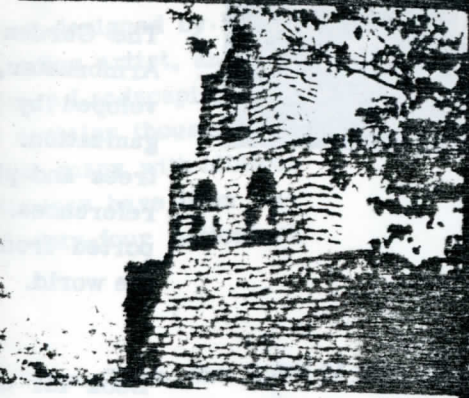


Support and maintenance of the Garden is through sacrificial gifts and offerings. Endowment gifts and inclusion in your will makes possible its perpetual care.

A permanent record of memorial gifts is kept in the Garden. Contributions to the Garden of Hope are tax deductible.

The Garden of Hope of Kentucky, Inc
699 Edgecliff Road
Covington, Kentucky 41014

The Chapel of Dreams



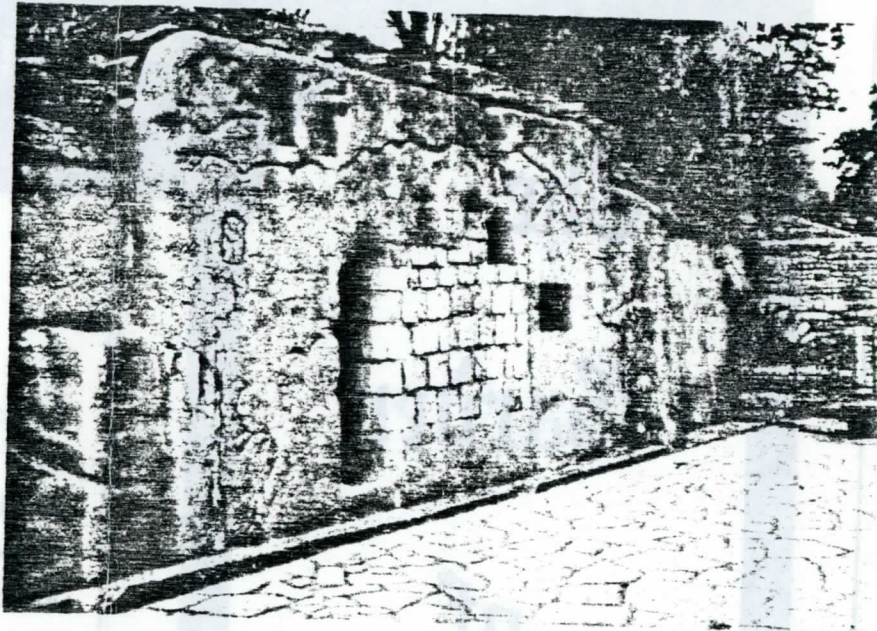
In the midst of the Garden is a small Chapel known as the Chapel of Dreams. This structure is patterned after a Spanish Mission Church, built in the year 1620.

The Chapel is one-fifth the size of the original mission church.

It is used for small weddings, meditation and prayer.

A pink stone at the altar is from the Horns of Hatten in the Holy Land, and comes from the mountain where Christ preached the Sermon on the Mount. On this stone couples will stand when marriage ceremonies are performed.

The Tomb



HE IS NOT HERE, FOR HE IS RISEN

In the Garden is a replica of the Garden Tomb in Jerusalem. This Tomb is believed by many to be the Tomb built by Joseph of Arimathea and given by him for the body of Christ.

Conferences were held with Dr. Solomon Mattar, Warden of the Garden Tomb in Jerusalem, with the thought of keeping the replica as true to the ancient Tomb as possible. You enter the narrow door cut in stone to find places for burial of three persons. On the space traditionally believed to have been the place where Christ lay is engraved "He is not here, for He has risen," and on the wall just above the slab is the quotation from John XIX 38:42: "Joseph of Arimathea took the body of Jesus. Now in the place where He was crucified there was a Garden and in the Garden a new sepulcher wherein was never man yet laid. There laid they Jesus."

Over a million pounds of steel and stone were used in the construction of the tomb and it is one of the largest in the world. The stone on top of the tomb is Kentucky stone, and geologists estimate the age of the stone at four hundred million years. The great wall behind the tomb is constructed of Indiana limestone. Geologists say that this stone is younger than Kentucky rock, and it is estimated to be three hundred and twenty-five million years old.

The markings on the outside of the Tomb are as those on the Jerusalem Tomb. The marking to the right of the entrance on the northern wall of the Tomb is a Greek expression meaning "Jesus Christ, Alpha and Omega" — the Beginning and the End.

A Reader's Digest article written by Clarence W. Hall in April 1957, describing the Garden Tomb in Jerusalem, was entitled, "You Can't Hold Back the Dawn." The Garden Tomb in Jerusalem is one of two traditional places of Christ's burial. The writer Hall said, "If I were to paint a picture that would symbolize this faith, I would make a picture of the dawn and of an empty tomb." He did not know when writing the article that that very Tomb was being built in Covington facing an eastern sun.

The Tomb was built at a cost of approximately \$40,000.00, and it was erected by the H. W. Miller Construction Company. It was two years in the building.

The Carpenter Shop



The Shop is constructed of Kentucky stone, and gives the effect of a building as it would have been built two thousand years ago. The heavy doors are handmade, then scorched and oil treated. The beams are hand hewn.

The tools in the Carpenter's Shop are from Nazareth and are many hundreds of years old. They were given by Prime Minister Ben Gurion of Israel for the Garden of Hope. This illustrates how men of every faith — Jew and Gentile, Catholic and Protestant — recognizing its spiritual significance for all, have contributed toward its building.

CARPENTER SHOP

The Carpenter's Shop houses a beautiful little Gift Shop.

Many of the gifts which are sold in the Shop are from Jerusalem.

In the Garden you will find many flowers and trees from the Holy Land, stone from the Good Samaritan Inn, from the River Jordan, from Solomon's Temple, from Horns of Hatten, and many other items of interest.