

"Now in the place where He was crucified there was a garden; and in the garden a new sepulchre, wherein was never man yet laid. There laid they Jesus . . ."

John 19:41-42

The Garden of Hope



"Come, see the place where the Lord lay." Matthew 28:6

CHRIST IS EVER LORD OVER DEATH

High on a hilltop along Edgecliff Drive in Covington, Kentucky, lies one of the most beautiful, picturesque and spectacular spots in America . . .

THE GARDEN OF HOPE
"Nothing Like It in America"

How it started



In 1938, on his first visit to the Holy Land, the builder of the Garden of Hope, Morris Coers, conceived the idea of bringing to America for the benefit of thousands unable to make the trip to the Holy Land as he had, a bit of the fragrance of that holy place.

In 1956 at the Dixie Garden Theater in Covington, Ky., at an Easter Sunrise Service, Mr. Coers first announced the development of the Garden of Hope.

At the time he proposed the Garden, Mr. Coers said, "This will be something for all the people, in the church or out. Millions have visited the Holy Land and the tomb there but many millions more never have had the opportunity. Now, in the heart of the midwest, there will be an exact copy of the tomb - free to all who want to come and experience it."

In 1958 the dream of the builder became a reality and high above the great metropolitan area, overlooking Covington and Newport, Kentucky, and Cincinnati, Ohio, there is silhouetted against the skies a magnificent Garden . . .

THE GARDEN OF HOPE

FROM THE BUILDER'S CREED

We believe that life is eternal, and that the tomb is symbolic of everlasting life. The Garden of Hope is built as a sanctuary and point of inspiration, and it is our hope that it will be the crossroads for humanity.

Let this be a place where the songs of the birds and the panorama of the cities will inspire people of every creed to a greater way of life. Here let walk those with vision, the sightless, the handicapped, with men who fail and with those who succeed. Let THE GARDEN GRANT HOPE AND FAITH TO ALL WHO TREAD UPON ITS SOIL. May God be glorified and may we walk in the shadow of His Presence.

- Morris Coers

Now



Today the Garden of Hope is open to everyone. Whatever your race, creed, religion, or denomination you are invited and welcome to the Garden of Hope. The Garden is for those of all walks of life who are interested enough to visit the Garden.

Rev. Walter A. Isley is the present pastor of the Immanuel Baptist Church of Covington, Kentucky. He stands ready and willing to assist anyone who might need his help in any way.

The Garden of Hope is here to inspire all people to a better way of life and a better understanding of Jesus Christ, who He was, and what He did for all men. All Christians can be united in one great doctrine, that Jesus Christ arose from the dead. The Empty Tomb is symbolic of that Resurrection.

Call Rev. Isley to make arrangements for:

- * Guided Tours through the Garden.
- * Beautiful weddings in the Garden.
- * Prayer Retreats for Youth and Adult Groups.
- * Meetings and services to be held in the Garden.

How you can be a part of the continuing ministry of the Garden of Hope. The Garden is maintained entirely by free will offerings and sacrificial contributions by those who love and use the Garden. You may contribute as you visit the Garden or you can mail your contribution to:

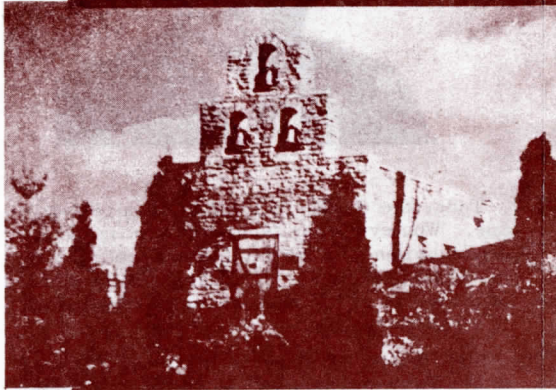
The Garden of Hope
Box 137, Rouse Station
Covington, Kentucky 41014

You may make Memorial Gifts in the name of those you love. Endowment gifts and inclusion in your will makes possible its perpetual care. Contributions to the Garden of Hope are tax deductible.

For further information about the Garden of Hope call Rev. Walter Isley at 261-6428 or 431-3426.

Tell all your friends about The Garden of Hope.

The Chapel of Dreams



In the midst of the Garden is a small Chapel known as the Chapel of Dreams. This structure is patterned after a Spanish Mission Church, built in the year 1620.

The Chapel is one-fifth the size of the original mission church.

It is used for small weddings, meditation and prayer.

PRAYER POINTS

On the Garden Trail you will find them ... beautiful prayers, voicing our common needs of healing, guidance and hope.

The Tomb

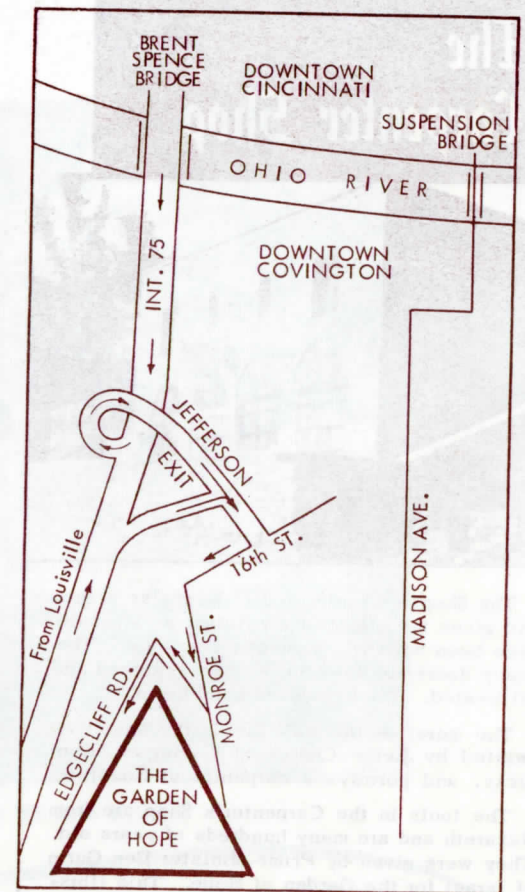


HE IS NOT HERE, F

In the Garden of Hope, a replica of the tomb of Jesus in Jerusalem, believed by many to be the place where he was buried and given by him for the body of Christ.

The replica was constructed with the same stones used in the construction of the original tomb. The markings on the outside of the tomb are the same as those on the original. You enter the narrow door cut in stone by the hands of men. Note "the place where the stone was rolled away."

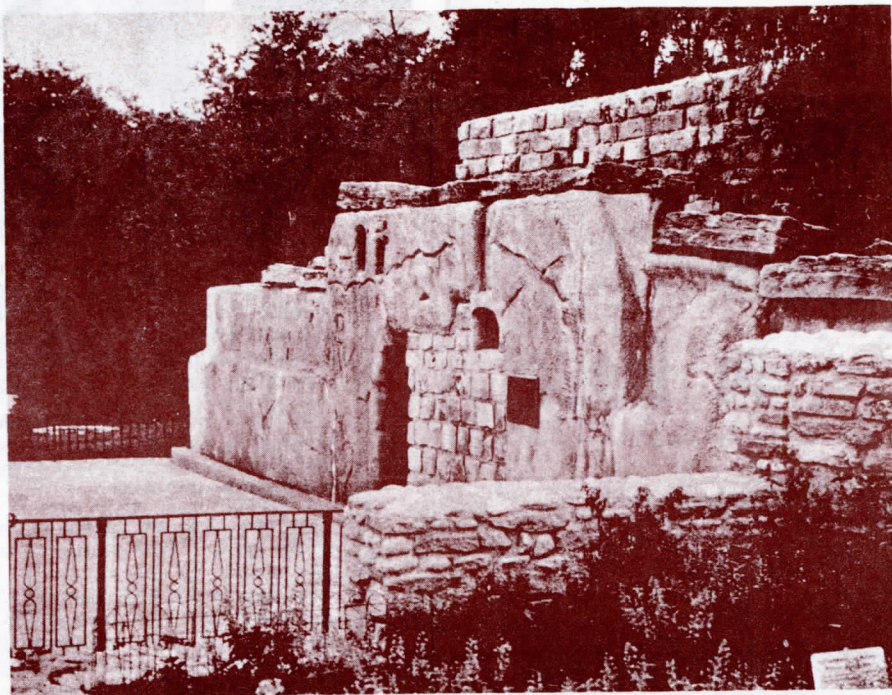
"NOTHING LIKE IT IN AMERICA"



If you are travelling on Interstate 75 take the Jefferson Avenue exit. Travel down Jefferson Avenue to 16th Street. Turn right on 16th Street go one block and turn left on Monroe Street. Go one block and turn right on Edgecliff Drive. The Garden of Hope is on the left at 699 Edgecliff Drive.

The building of the Garden was in a large way made possible by the sacrificial spirit and cooperation of the Immanuel Baptist Church, Covington, Kentucky, presently pastored by Rev. Walter A. Isley. The church stands at the South East corner of 20th and Greenup Streets.

The Tomb



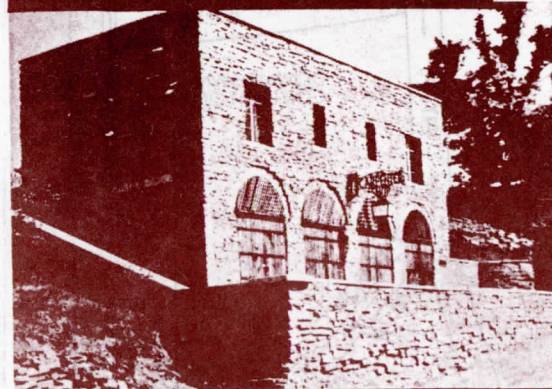
HE IS NOT HERE, FOR HE HAS RISEN

In the Garden is a replica of the Garden Tomb in Jerusalem, believed by many to be the Tomb built by Joseph of Arimathea and given by him for the body of Christ.

The replica was constructed with the thought of keeping it as true to the ancient Tomb as possible. Over a million pounds of stone and steel were used in the construction, and it is one of the largest in the world. The markings on the outside of the tomb are as those on the Jerusalem tomb. You enter the narrow door cut in stone to find places for burial of three persons. Note "the place where the Lord lay."

"NOTHING LIKE IT IN AMERICA"

The Carpenter Shop



The Shop is constructed of Kentucky stone, and gives the effect of a building as it would have been built two thousand years ago. The heavy doors are hand made, then scorched and oil treated. The beams are hand hewn.

The mural on the wall inside the shop was painted by Leroy Coates of Covington, Kentucky, and portrays a carpenter of Nazareth.

The tools in the Carpenter's Shop are from Nazareth and are many hundreds of years old. They were given by Prime Minister Ben Gurin of Israel for the Garden of Hope. This illustrates how men of every faith – Jew and Gentile, Catholic and Protestant – recognizing its spiritual significance for all, have contributed toward its building.

On guided tours through the Garden you will be able to purchase gifts and souvenirs of your visit. The money you spend or contribute will go to maintain the Garden and continue its operation.

YOU WILL FIND IN THE GARDEN

- * A wine press like those in Jerusalem.
- * Many flowers and trees from the Holy Land.
- * A stone from the Good Samaritan Inn.
- * A stone from the Jordan River.
- * A stone from Solomon's Temple.
- * A stone from the Horns of Hatten.
- * A beautiful statue of Christ preaching the Sermon on the Mount.
- * And many other items of interest.