

Garden of Hope
#27

The Garden of Hope



High on a hilltop beyond the end of Edgecliff Drive, Covington, Kentucky, lies one of the most beautiful, picturesque and spectacular spots in America . . .

THE GARDEN OF HOPE

"Nothing Like It in America"

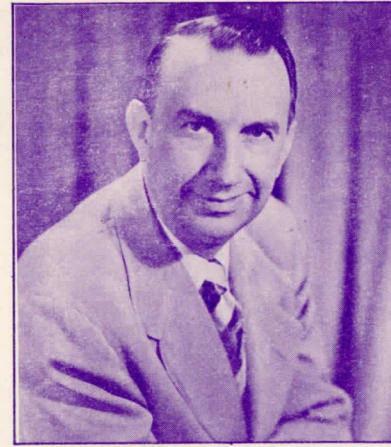
How it started

In 1938, on his first visit to the Holy Land, the Builder of the Garden of Hope, Morris Coers, conceived the idea of bringing to America for the benefit of the thousands unable to make the trip to the Holy Land as he had, a bit of the fragrance of that holy place.

In 1956 at the Dixie Garden Theatre in Covington, Ky., at an Easter Sunrise Service, Mr. Coers first announced the development of the Garden of Hope.

In 1958 the dream of the Builder became a reality and high above the great metropolitan area, overlooking Covington and Newport, Kentucky, and Cincinnati, Ohio, there is silhouetted against the skies a magnificent Garden . . .

THE GARDEN OF HOPE



The Founder & Builder

1908 — MORRIS H. COERS — 1960

Morris Coers was a colorful person known to thousands because of his rich and varied experiences, sympathy and understanding of all groups. He was not only a minister but served in General Patton's Army as a Red Cross worker. He was a Representative in the Indiana Legislature, special lecturer for Rotary International, originator of the popular radio program "The Temple of the Air" and the TV program "Chapel of Dreams". He was loved and respected by men of every faith and class for nobody in need was ever turned away. He was a familiar figure at midnight in the hospital or in the courtroom.

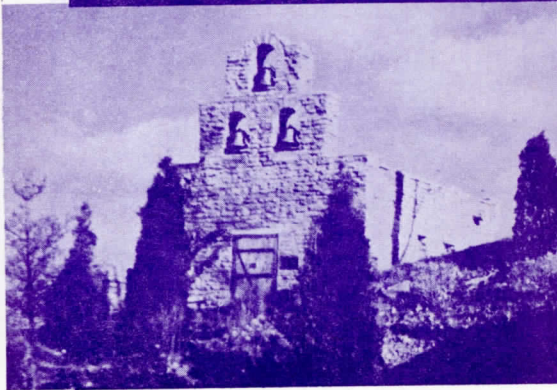
"He walked with kings and princes unabashed, and paupers unashamed".

* * *

At a quiet spot in the Garden, in the shadow of the little Chapel of Dreams you will find a marble stone which marks the grave of The Founder and Builder, bearing the simple inscription

"He went about doing good".

The Chapel of Dreams



In the midst of the Garden is a small Chapel known as the Chapel of Dreams. This structure is patterned after a Spanish Mission Church, built in the year 1620.

The Chapel is one-fifth the size of the original mission church.

It is used for small weddings, meditation and prayer.

PRAYER POINTS

On the Garden Trail you will find them . . . beautiful prayers, voicing our common needs of healing, guidance and hope.

The Tomb



HE IS NOT HERE, BUT

In the Garden

Jerusalem, believed by many to be the site of the original tomb, and given by him for the body of Christ.

The replica was constructed with the same materials as the original to the ancient Tomb as possible. Over 100 tons of stone were used in the construction, and is considered one of the most magnificent erected at a cost of approximately \$400,000.

"NOTHING LIKE IT IN AMERICA"

The Builder's Creed

We believe in the eventual goodness of mankind, and that beauty and fragrance will dominate and possess the earth; that life is eternal, and that the empty tomb is symbolic of everlasting life. The Garden of Hope is built as a sanctuary and point of inspiration, and it is our hope that it will be the crossroads for humanity.

Let this be a place where the songs of the birds and the panorama of the cities will inspire people of every creed to a greater way of life. Here let walk those with vision, the sightless, the handicapped, with men who fail and with those who succeed. LET THE GARDEN FEED THE HUNGRY, GIVE MATERIAL SUSTENANCE TO THE NEEDY, AND GRANT HOPE AND FAITH TO ALL WHO TREAD UPON ITS SOIL. May God be glorified and may we walk in the shadow of His Presence.

—MORRIS COERS

* * *

How You May Have a Part In the Garden:

The untimely death of the Founder gives to each of us a share in helping his dream come true. Maintenance of the Garden is largely through sacrificial gifts and offerings. Endowment gifts and inclusion in your will makes possible its perpetual care.

Contributions to The Garden of Hope are deductible

The Tomb



HE IS NOT HERE, FOR HE HAS RISEN

In the Garden is a replica of the Garden Tomb in Jerusalem, believed by many to be the Tomb built by Joseph of Arimathea and given by him for the body of Christ.

The replica was constructed with the thought of keeping it as true to the ancient Tomb as possible. Over a million pounds of stone and steel were used in the construction, and is one of the largest in the world. It was erected at a cost of approximately \$40,000.00.

"NOTHING LIKE IT IN AMERICA"

The Carpenter Shop



The Shop is constructed of Kentucky stone, and gives the effect of a building as it would have been built two thousand years ago. The heavy doors are hand made, then scorched and oil treated. The beams are hand hewn.

The tools in the Carpenter's Shop are from Nazareth and are many hundreds of years old. They were given by Prime Minister Ben Gurion of Israel for the Garden of Hope. This illustrates how men of every faith — Jew and Gentile, Catholic and Protestant — recognizing its spiritual significance for all, have contributed toward its building.

CARPENTER SHOP

The space above the Carpenter's Shop houses a beautiful little Gift Shop.

Many of the gifts which are sold in the Shop are from Jerusalem.

In the Garden you will find many flowers and trees from the Holy Land, stone from the Good Samaritan Inn, from the River Jordan, from Solomon's Temple, from Horns of Hatten, and many other items of interest.