

FRIDAY, SEPTEMBER 26, 1958.

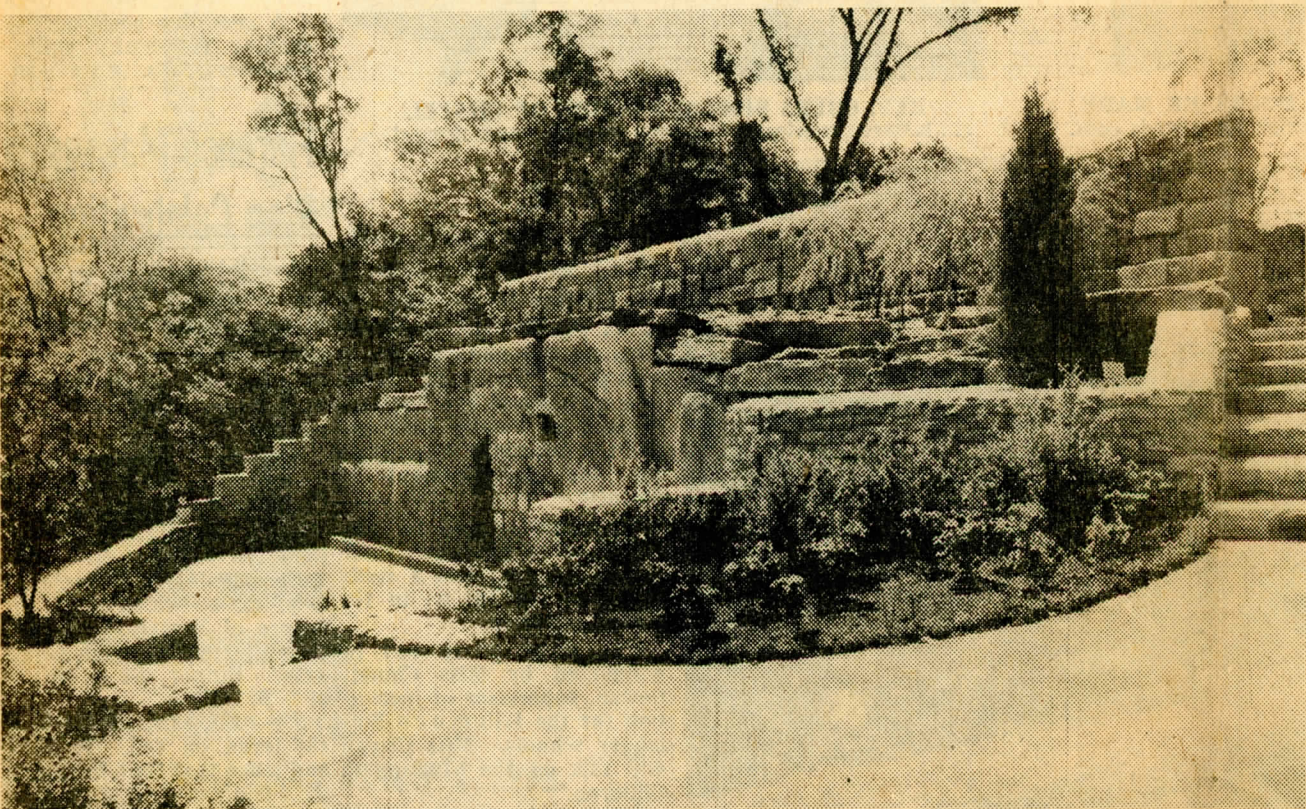
FORECAST: Showers tonight, Saturday. Low tonight 6

VIVES PROGRESS

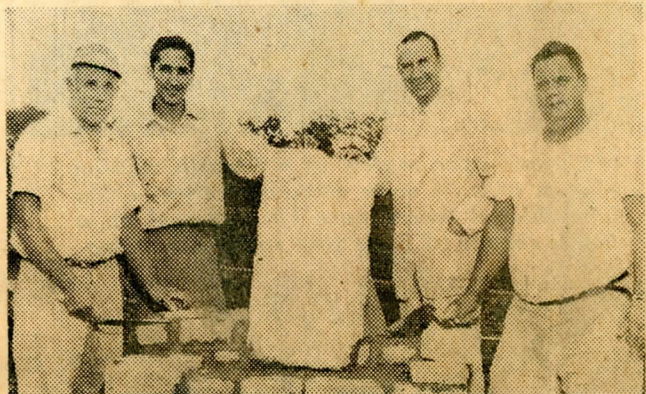
Zenith ext
 * TOP TUNING
 * 18,000 VOLTS
 * SUNSHINE PIC
 * PULL-PUSH O
 * TONE CONTR
 * Base Optional

WK.
 FERRY

Garden Rises in Beauty



REPLICA OF CHRIST'S TOMB — Shown above, is replica of Christ's tomb, principal attraction of Garden of Hope, which is nearing completion in Covington. The tomb is a precise copy of original in Jerusalem and is beautifully landscaped. At right, stone masons lay a portion of the Wailing Wall of Solomon's Temple, believed to be the only stone removed from the original scene to another part of the world. A compass was used to insure that the stone faces Jerusalem 11,000 miles away. Left to right are William Hillebrand, stone mason; Sammy Matter, caretaker of the garden who is the son of Solomon Matter, keeper of the garden in Jerusalem; Rev. Morris



Toll Road Work Suit Up in Court

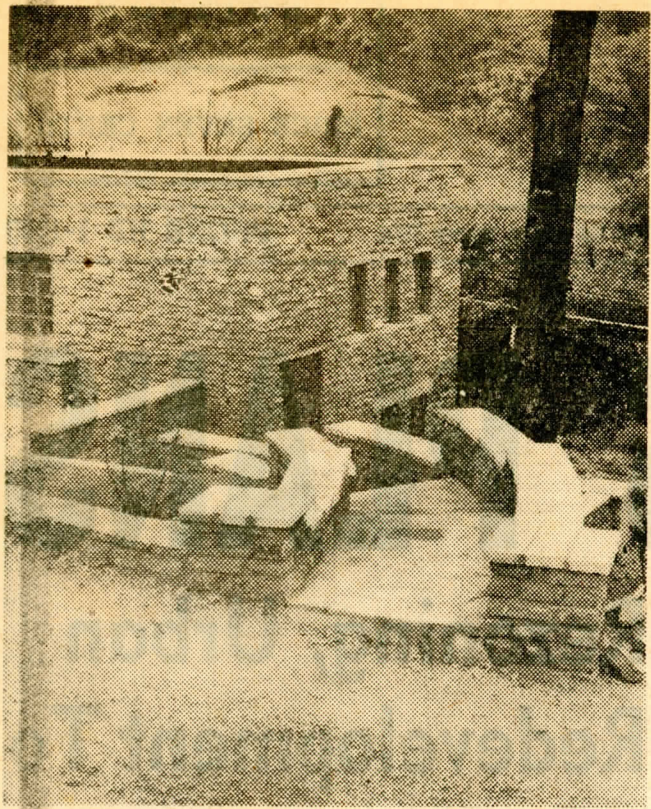
Contractor Asks \$225,000 From the State

Special to Post, Times-Star
 FRANKFORT, KY., Sept. 26.—Whether the Commonwealth is to be held liable to one contractor for \$225,000 for damages incident to delay in connection with the Louisville-Elizabethtown toll road in 1955 was argued before the Kentucky Court of Appeals today.
 Squire N. Williams Jr., sitting as special judge of Franklin Circuit Court, held the State Highway Department liable for \$225,791.78 in damages incident to its failure to turn over to J. B. Michels and Co., Inc., Memphis, Tenn., for paving a 12.3 mile stretch of road on the turnpike when it was so required by its contract.

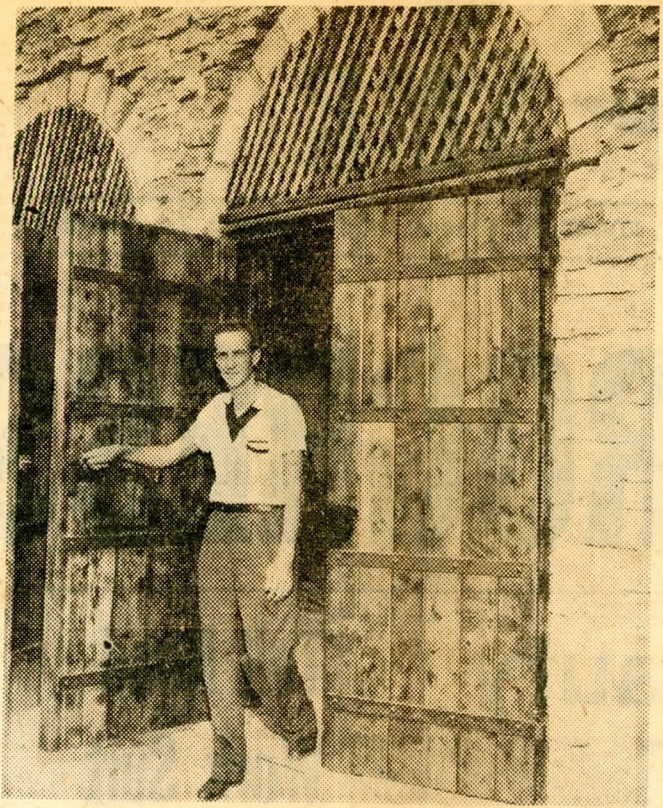
Failure was attributed to the fact that the grade and drain contractor, Traylor Bros., Inc., Evansville, Ind., had been delayed in operations, so that the finished portions were not ready on time.

Edward A. Marye Jr., Versailles, Assistant Attorney General who argued the

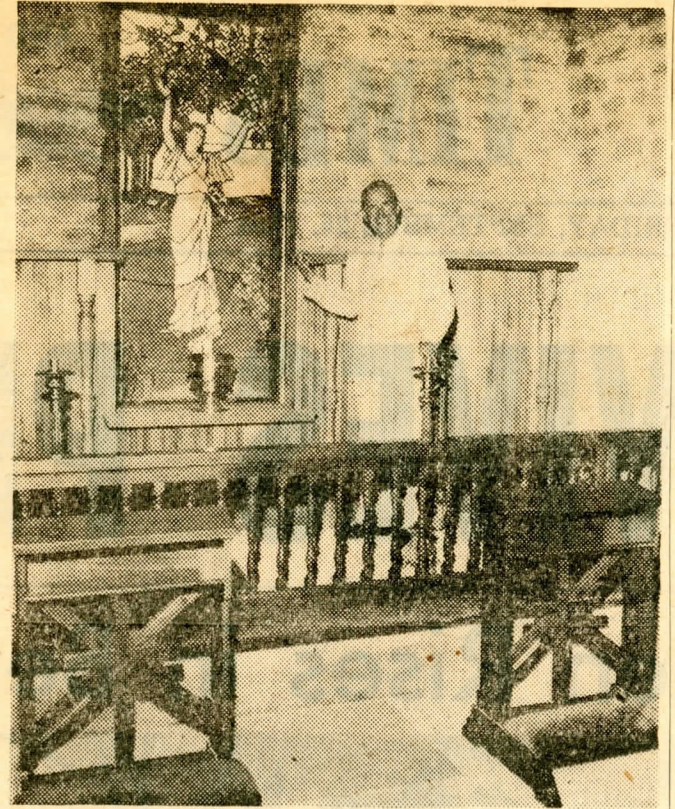
Dedication Planned During October



CARPENTER SHOP OF BIBLICAL TIMES
... created to exactly resemble one of 2000 years ago.



KRECO GRAVES WITH DOORS HE MADE
... of solid cypress, they weigh 200 pounds each.

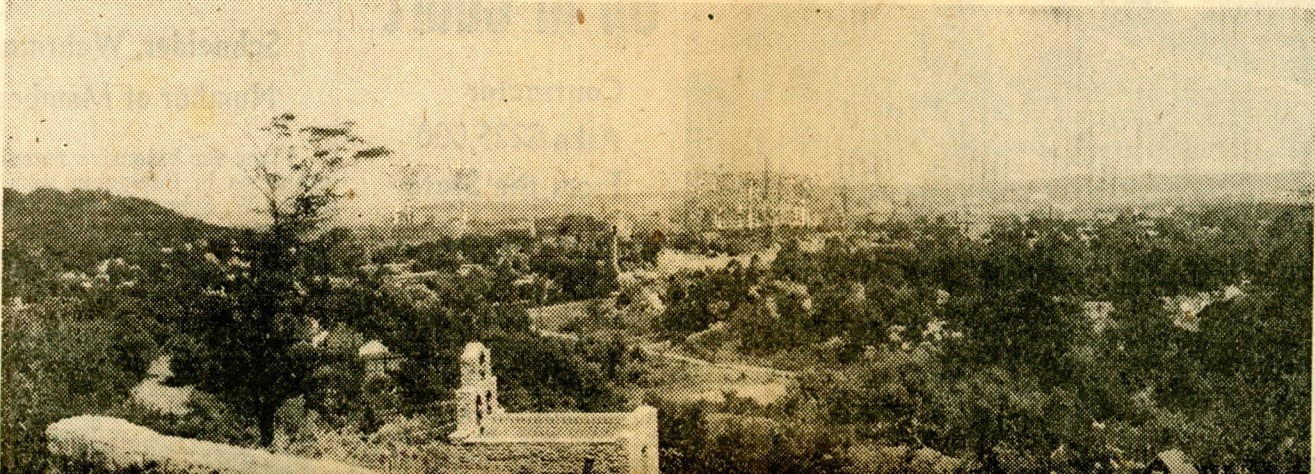


REV. COERS DISPLAYS INSIDE OF CHAPEL
... between kneelers, stone from mountain near Jerusalem.

Garden of Hope Rises in Beauty

(Continued from Page One) will suffer some from too much traffic taxing the area, say on a Sunday, but the scene lies just next to the new access highway going through and it readily can be seen that it will be in perfect location in the future.

Impressed by the natural beauty of the original garden



ro
ci
C
T
th
no
ta

For example, a (Williamstown) tele customer can dial d Chicago by dialing "1 the area directing o this case "312"—and Chicago number desi

A new blue book cording frequently numbers—calls ca

Florence Maso Plan Celebrati

P.-T. A.

"What Do I Expect of My Child" will be the topic of Dr. Charles Baron, who will speak at the meeting of the Erlanger Elementary PTA at 2:30 p. m., Oct. 1. Dr. Baron is a member of the National Council on Family Relations and the American Association for the Advancement of Science.

The meeting will be preceded by an executive meeting at 1 p. m., and a study group at 1:30 p. m. in the school cafeteria.

A celebration in h the second annivers Florence Lodge No. 9 and Accepted Masons held Saturday at the Elementary School torium.

The Rev. Albert grand chaplain of the Lodge of Kentucky, at Masonic dignitaries tend the program.

Ceremonies will b 3 p. m. at which t degree of Master Ma

will suffer some from too much traffic taxing the area, say on a Sunday, but the scene lies just next to the new access highway going through and it readily can be seen that it will be in perfect location in the future.

Impressed by the natural beauty of the original garden in Jerusalem, Rev. Coers has created in precise detail the replica in Covington.

Photographs were used to insure that the same number and sizes and even shapes, of stones were placed in the front of the tomb. The tomb itself is made of more than a million pounds of steel and concrete.

A man who lived in Bethlehem was retained to do the ironwork to give it authenticity.

Sammy Mattar, son of the keeper of the garden in Jerusalem, has been brought here by Rev. Coers to serve as keeper of the local garden. He will live in quarters at the garden and now is attending Villa Madonna College.

Before it is completed the Garden of Hope will include a replica of Jacob's Well of the Bible.

There is now at the scene a stone from the famed Wailing Wall of Jerusalem, all that remains of Solomon's Temple, believed to be the only stone ever moved from the original scene.

This, Rev. Coers believes, will have great meaning for members of the Jewish faith and will particularly reflect the inter-faith nature of the garden.

A "Chapel of Dreams" has been built, modeled after a Catholic Spanish mission and named after Rev. Coers' TV program. It includes stained glass windows from the Protestant Christ Church of Cincinnati and candlesticks that were the gift of a Cincinnati Catholic church.

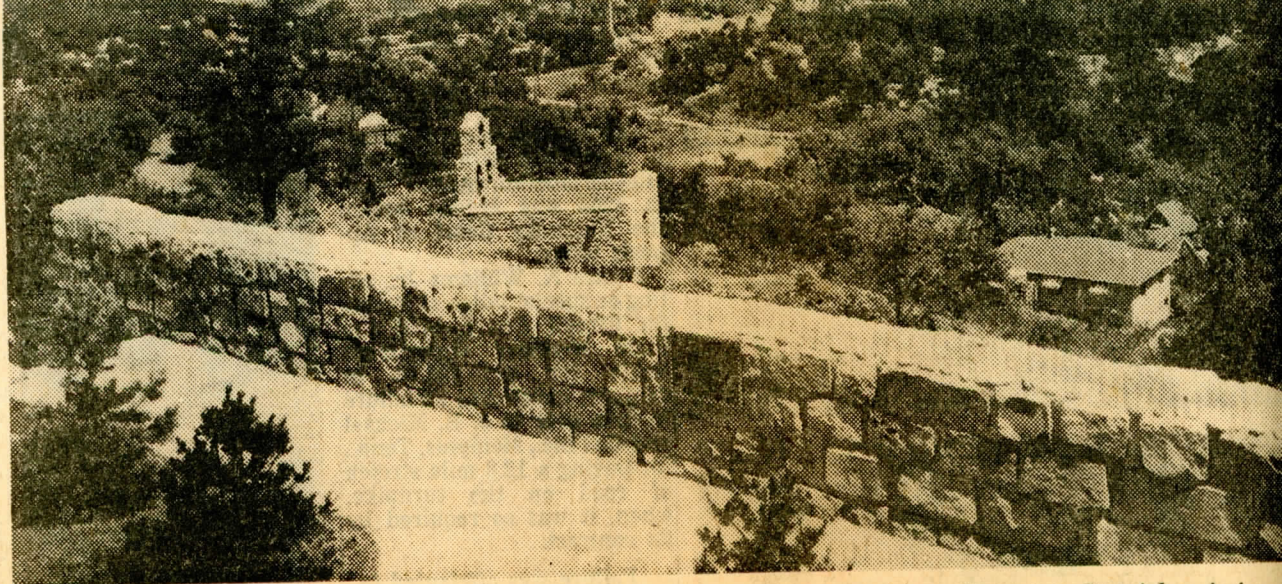
In its spire are three bells from the last steam engines on the L & N. Railroad in Kentucky and inside are an organ, kneeling benches and a stone from the place where Christ preached the Sermon on the Mount.

Rev. Coers says he hopes the chapel will be a place where persons of all faiths can be married by ministers of all religions.

High on a hill overlooking the scene, where once fiery Klu Klux Klan crosses cast their eerie glow in the night sky, will be erected the three crosses of Calvary, Rev. Coers said.

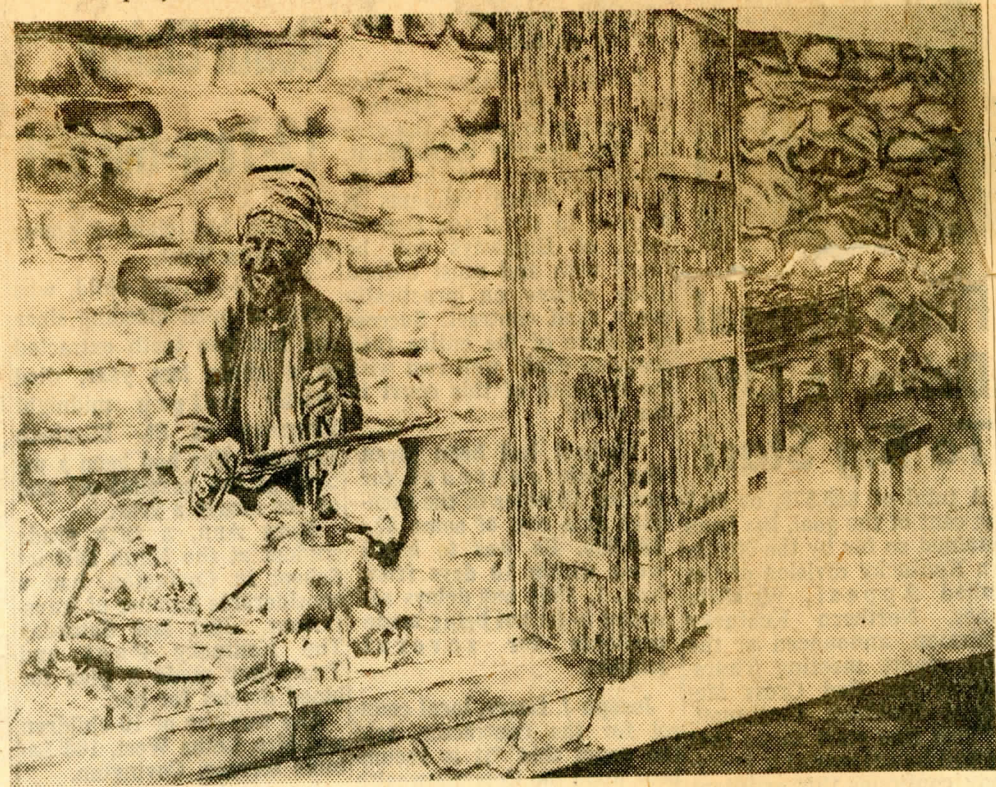
Flowers will bloom the year around in the garden, being rotated so that some varieties always are in bloom.

Money for the project has come in from all over, Rev. Coers says, and members of his congregation have assisted in the building of the project.



VIEW FROM TOP OF TOMB—Downtown Covington and the towers of Cincinnati offer a breathtaking view from the parking area at the top of Christ's tomb. Just beyond the wall

can be seen the replica of a Spanish mission church with its spire containing three bells. The Biblical scenes have been created on a hill at the top of West 16th street, Covington.



CARPENTER SHOP MURAL—Leroy Coates, member of Rev. Morris Coers' congregation, is in the act of creating a mural inside the carpenter shop at the Garden of Hope, Covington, which depicts a carpenter of Biblical times. The mural is unique in that it shows the outside of the carpenter shop just as it is, even to knotholes and iron straps on the great wooden doors.

P.-T. A.

October 3 was selected the festival date by New Junior High School PTA, Mrs. Marvin Bradley, fest chairman, in charge, at initial fall meeting. There will be a sur

of the board of governors of the garden, made the eight doors for the carpenter shop with the help of Elmer Wendling and John Flege. The doors weigh 200 pounds each and resemble in detail doors of Biblical times.

A beautiful mural depicting a Biblical carpenter has been done on one of the walls of the carpenter shop by Leroy Coates, also of the congregation. Elbert Reams and Glenn

Meyers, other members of the garden board of governors, also were instrumental in helping put the scene in its present state of near completeness.

The carpenter shop will be used as a souvenir shop, items for which will be sent by Solomon Mattar from Jerusalem with proceeds helping the poor of the Mid-East, as well as paying for upkeep of the garden.

Sammy Mattar, keeper of the garden, will live in an apartment above the carpenter shop, Rev. Coers said.

Other woodwork at the garden was done by another member of Rev. Coers' con-